

Updated Interim Results of Sonrotoclax + Dexamethasone in Patients With t(11;14)-Positive Relapsed/Refractory Multiple Myeloma: An All-Oral Treatment

PF721

Binod Dhakal,¹ Malin Hultcrantz,² Nitya Nathwani,³ Christopher P. Venner,⁴ Jin Lu,⁵ Michael J. Slade,⁶ Jonathan L. Kaufman,⁷ Hun Chuah,⁸ Chang-Ki Min,⁹ Kihyun Kim,¹⁰ Huan Cheng,¹¹ Adam Idoine,¹¹ Wanhua Zhang,¹² Xin Wang,¹³ Amit Agarwal,¹¹ Hang Quach¹⁴

¹Medical College of Wisconsin, Milwaukee, WI, USA; ²Memorial Sloan Kettering Cancer Center, New York, NY, USA; ³City of Hope, Duarte, CA, USA; ⁴BC Cancer - Vancouver Centre, Vancouver, BC, Canada; ⁵Peking University People's Hospital, Beijing, China; ⁶Washington University, St. Louis, MO, USA; ⁷Emory University, Atlanta, GA, USA; ⁸Royal Perth Hospital, Perth, WA, Australia; ⁹The Catholic University of Korea Seoul, St. Mary's Hospital, Seoul, South Korea; ¹⁰Sungkyunkwan University School of Medicine, Samsung Medical Center, Seoul, South Korea; ¹¹BeOne Medicines Ltd, San Carlos, CA, USA; ¹²BeOne Medicines Ltd, Beijing, China; ¹³BeOne Medicines Ltd, Shanghai, China; ¹⁴St. Vincent's Health Australia, University of Melbourne, Melbourne, VIC, Australia

CONCLUSIONS

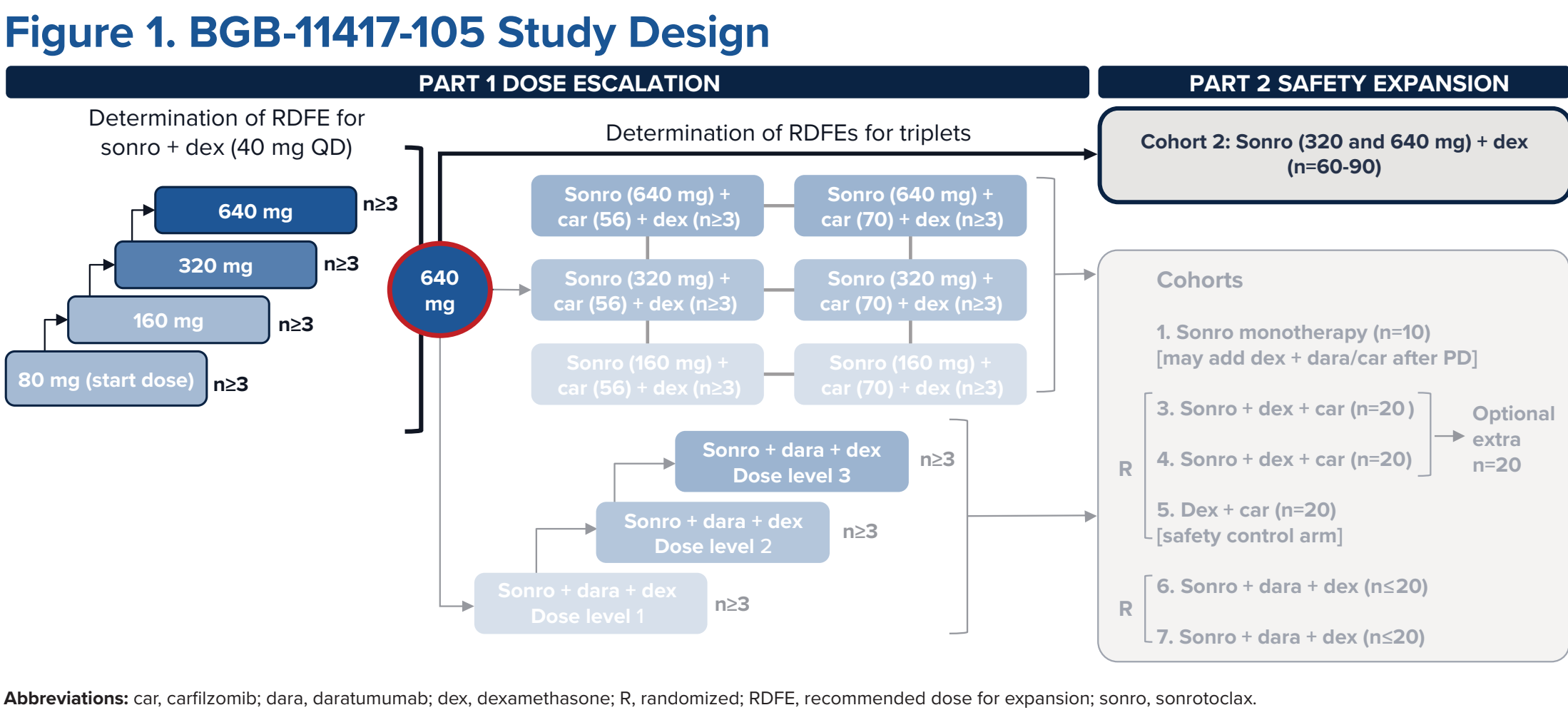
- The all-oral combination of sonrotoclax + dexamethasone continued to show a tolerable safety profile, with low rates of grade ≥3 infection and hematologic toxicity
- Efficacy was promising, with an overall response rate of 80.6% and very good partial response or better rate of 55.6% in the 640-mg cohort, in patients with t(11;14)-positive relapsed/refractory MM
- With a median study follow-up of 12 months, the median PFS was 12.9 months (95% CI, 9.0-19.6 months) for the sonrotoclax 640-cohort, in which most patients had triple class exposed/refractory disease
- Enrollment in BGB-11417-105 is ongoing; additional treatment combinations with sonrotoclax are being investigated

INTRODUCTION

- Multiple myeloma (MM) with t(11;14), found in approximately 15% to 20% of patients at first diagnosis, represents a unique disease subset with distinct features¹
- Although B-cell lymphoma 2 (BCL2) inhibitors in monotherapy or combination regimens have shown clinical activity in patients with MM, no BCL2-targeted treatments are currently approved for treating MM²
- Sonrotoclax (BGB-11417), a next-generation BCL2 inhibitor, is more selective and pharmacologically potent than venetoclax, with a shorter half-life and no drug accumulation³
- Initial data from the BGB-11417-105 study indicated that sonrotoclax + dexamethasone is well tolerated and can induce deep and durable responses in heavily pretreated patients with t(11;14) MM⁴
- Presented here are updated safety and efficacy data for sonrotoclax + dexamethasone combination therapy from BGB-11417-105

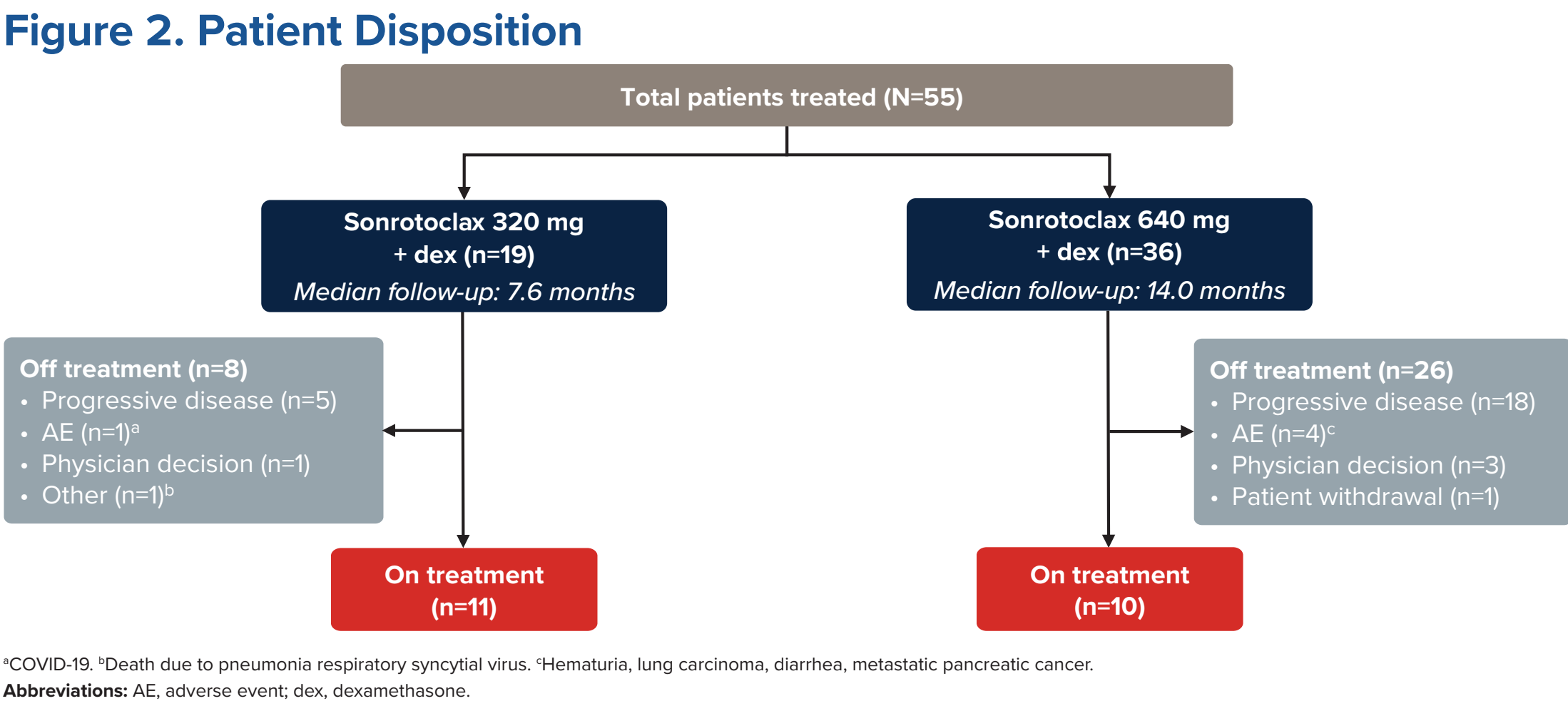
METHODS

- BGB-11417-105 (NCT04973605) is an ongoing, open-label, phase 1b/2, dose-escalation and dose-expansion study evaluating sonrotoclax as mono- or combination therapy in patients with t(11;14)-positive relapsed/refractory MM (**Figure 1**)
- Key eligibility criteria included
 - Centrally-confirmed t(11;14)
 - At least 3 prior lines of therapy for all dose-escalation cohorts + safety expansion cohorts per protocol amendment 5.0 or later (for safety expansion cohorts per protocol amendment 4.1 or earlier, only 1 prior line of therapy was required)
 - Exposure to a proteasome inhibitor (PI), an immunomodulatory drug (IMiD), and an anti-CD38 antibody
- Sonrotoclax is administered orally once daily; dexamethasone 40 mg is administered orally or intravenously once weekly
- Study endpoints include safety/tolerability, recommended dose for expansion (RDFE; part 1), and antimyeloma activity of sonrotoclax + dexamethasone combination therapy



RESULTS

- As of March 20, 2025, 55 patients have received sonrotoclax 320 mg or 640 mg once daily + dexamethasone in part 1 or part 2 and were evaluable; median follow-up time was 12.0 months (range, 0.1-36.4 months; **Figure 2**)
 - 21 patients remain on treatment
- Patients had a median of 3 prior therapy lines (range, 1-12), and 65.5% had ≥3 prior lines (**Table 1**)
 - All patients had prior PI and IMiD exposure, and 72.7% had prior anti-CD38 therapy
 - Many patients were refractory to PI (54.5%), IMiD (65.5%), or anti-CD38 (54.5%), and 40.0% were refractory to all 3 drug classes



Characteristic	Sonro 320 mg + dex (n=19)	Sonro 640 mg + dex (n=36)	Total (N=55)
Age, median (range), years	70 (44-86)	69 (48-80)	70 (44-86)
Male sex, n (%)	8 (42.1)	19 (52.8)	27 (49.1)
ECOG PS, n (%)			
0	11 (57.9)	17 (47.2)	28 (50.9)
1	6 (31.6)	17 (47.2)	23 (41.8)
2	2 (10.5)	2 (5.6)	4 (7.3)
R-ISS stage at initial diagnosis, n (%)			
I	3 (15.8)	7 (19.4)	10 (18.2)
II	8 (42.1)	17 (47.2)	25 (45.5)
III	2 (10.5)	6 (16.7)	8 (14.5)
Unknown	6 (31.6)	6 (16.7)	12 (21.8)
Time from most recent R/R episode to first dose, median (range), months	1.8 (0.5-23.7)	1.9 (0.4-93.8) ^a	1.9 (0.4-93.8)
Cytogenetic risk, n (%)			
High ^b	6 (31.6)	5 (13.9)	11 (20.0)
Not High	12 (63.2)	31 (86.1)	43 (78.2)
Unknown	1 (5.3)	0	1 (1.8)
Prior lines of systemic therapy, median (range)	3 (1-7)	3 (1-12)	3 (1-12)
Prior lines of systemic therapy, n (%)			
1	1 (5.3)	8 (22.2)	9 (16.4)
2	2 (10.5)	8 (22.2)	10 (18.2)
≥3	16 (84.2)	20 (55.6)	36 (65.5)
Prior exposure, n (%)			
PI	19 (100)	36 (100)	55 (100)
IMiD	19 (100)	36 (100)	55 (100)
Anti-CD38 antibody ^c	16 (84.2)	24 (66.7)	40 (72.7)
≥1 PI + ≥1 IMiD + ≥1 anti-CD38 antibody ^c	16 (84.2)	24 (66.7)	40 (72.7)
Refractory status, n (%)			
PI	10 (52.6)	20 (55.6)	30 (54.5)
IMiD	12 (63.2)	24 (66.7)	36 (65.5)
Anti-CD38 antibody ^c	12 (63.2)	18 (50.0)	30 (54.5)
≥1 PI + ≥1 IMiD + ≥1 anti-CD38 antibody ^c	7 (36.8)	15 (41.7)	22 (40.0)
Prior autologous transplant, n (%)	10 (52.6)	23 (63.9)	33 (60.0)

^aData for 1 patient is missing. ^bHigh-risk disease was defined as genetic subtype t(4;14), t(14;16), and del(17)p13. ^cAnti-CD38 treatment was not required for study patients in Australia, New Zealand, or Brazil in cohort 2 of part 2.

Abbreviations: dex, dexamethasone; ECOG PS, Eastern Cooperative Oncology Group performance status; IMiD, immunomodulatory drug; PI, proteasome inhibitor; R-ISS, Revised International Staging System; R/R, relapsed/refractory; sonro, sonrotoclax.

- The safety profile was tolerable and manageable for both dose cohorts (**Table 2**)
- Two patients in each cohort died due to treatment-emergent adverse events (TEAEs; 320 mg: pneumonia respiratory syncytial virus and COVID-19; 640 mg: hypoventilation related to lung-involved progressive disease and metastatic pancreatic cancer); none of these TEAEs was considered related to study treatment
 - In the 640-mg cohort, 4 additional deaths occurred >30 days after the last dose; 2 deaths were attributed to the disease under study, and 2 were attributed to other reasons that were unrelated to TEAEs

Patients, n (%)	Sonro 320 mg + dex (n=19)	Sonro 640 mg + dex (n=36)	Total (N=55)
Any TEAE	18 (94.7)	36 (100)	54 (98.2)
Grade ≥3	8 (42.1)	17 (47.2)	25 (45.5)
Serious	4 (21.1)	10 (27.8)	14 (25.5)
Leading to death	2 (10.5)	2 (5.6)	4 (7.3)
TEAE leading to dose interruption	5 (26.3)	17 (47.2)	22 (40.0)
Sonro	5 (26.3)	16 (44.4)	21 (38.2)
Dex	4 (21.1)	11 (30.6)	15 (27.3)
TEAE leading to dose reduction	6 (31.6)	15 (41.7)	21 (38.2)
Sonro	0	3 (8.3)	3 (5.5)
Dex	6 (31.6)	15 (41.7)	21 (38.2)
TEAE leading to treatment discontinuation	3 (15.8)	8 (22.2)	11 (20.0)
Sonro	1 (5.3)	4 (11.1)	5 (9.1) ^a
Dex	3 (15.8)	8 (22.2)	11 (20.0) ^b

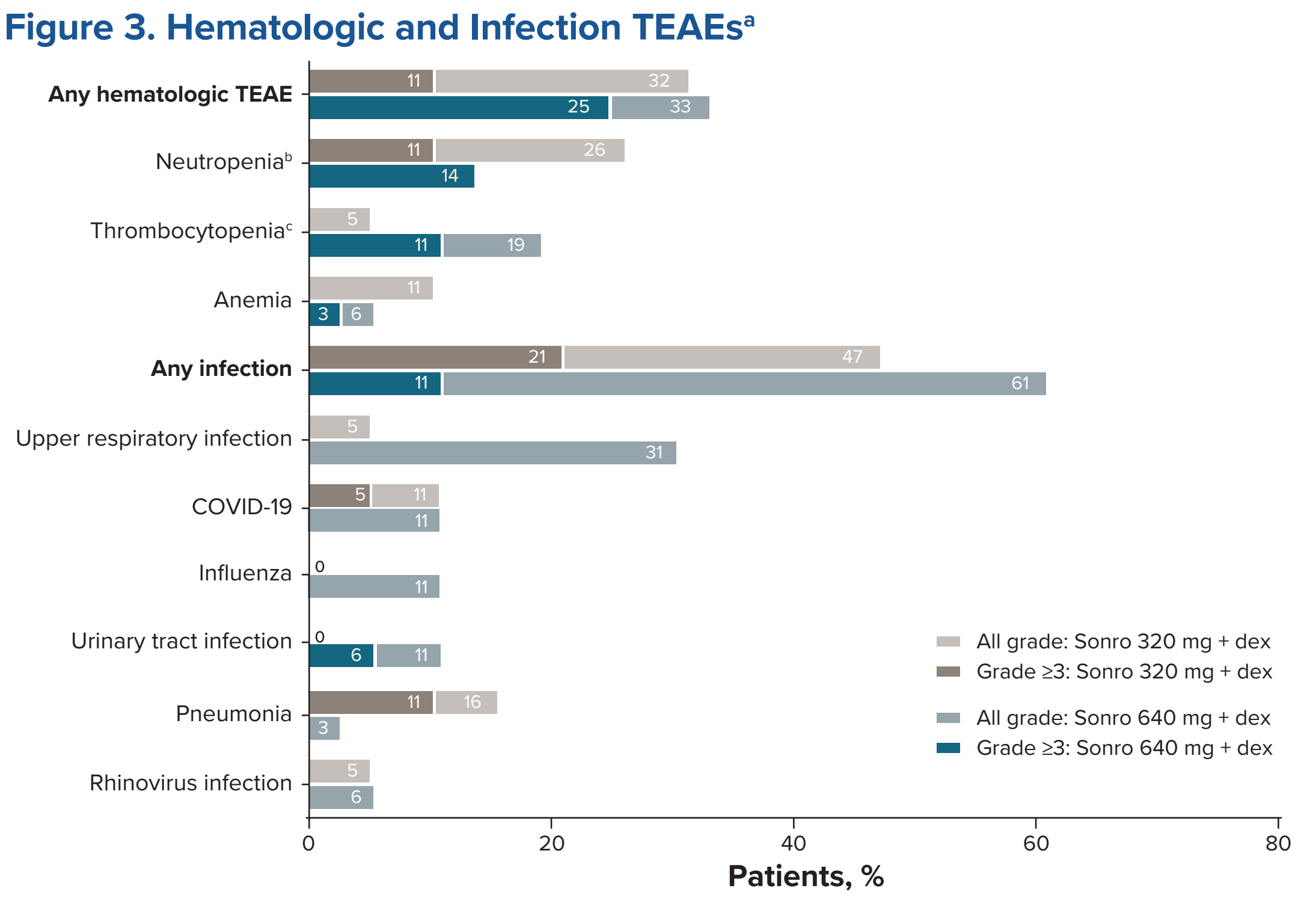
^an=1 each: COVID-19, hematuria, lung adenocarcinoma, metastatic pancreatic cancer, and diarrhea. ^bn=2 each: mental agitation and insomnia; n=1 each: worsening insomnia, COVID-19, hematuria, lung adenocarcinoma, metastatic pancreatic cancer, diarrhea, and proximal myopathy.

Abbreviations: dex, dexamethasone; sonro, sonrotoclax; TEAE, treatment-emergent adverse event.

- The most common all-grade TEAEs were insomnia (36.8%) and fatigue (31.6%) for the 320-mg cohort and insomnia (38.9%) and diarrhea (38.9%, all grade 1 or 2) for the 640-mg cohort; across both cohorts, the most common grade ≥3 TEAE was neutrophil count decreased (**Table 3**)
- Hematologic and infection TEAEs of any grade were seen in 32.7% and 56.4% of all patients, respectively (**Figure 3**)
- Grade 3 or higher hematologic and infection TEAEs were seen in 20.0% and 14.5% of all patients, respectively

Patients, n (%)	All grade	Grade ≥3	All grade	Grade ≥3	All grade	Grade ≥3
Insomnia	7 (36.8)	1 (5.3)	14 (38.9)	1 (2.8)	21 (38.2)	2 (3.6)
Fatigue	6 (31.6)	0	11 (30.6)	2 (5.6)	17 (30.9)	2 (3.6)
Diarrhea	0	0	14 (38.9)	0	14 (25.5)	0
Upper respiratory tract infection	1 (5.3)	0	11 (30.6)	0	12 (21.8)	0
Nausea	3 (15.8)	0	7 (19.4)	0	10 (18.2)	0
Contusion	1 (5.3)	0	7 (19.4)	1 (2.8)	8 (14.5)	1 (1.8)
Dyspnea	3 (15.8)	0	5 (13.9)	0	8 (14.5)	0
Arthralgia	2 (10.5)	0	5 (13.9)	0	7 (12.7)	0
Dizziness	2 (10.5)	0	5 (13.9)	0	7 (12.7)	0
Neutrophil count decreased	4 (21.1)	2 (10.5)	3 (8.3)	3 (8.3)	7 (12.7)	5 (9.1)
Constipation	0	0	6 (16.7)	0	6 (10.9)	0
Fall	1 (5.3)	0	5 (13.9)	1 (2.8)	6 (10.9)	1 (1.8)
COVID-19	2 (10.5)	1 (5.3)	4 (11.1)	0	6 (10.9)	1 (1.8)

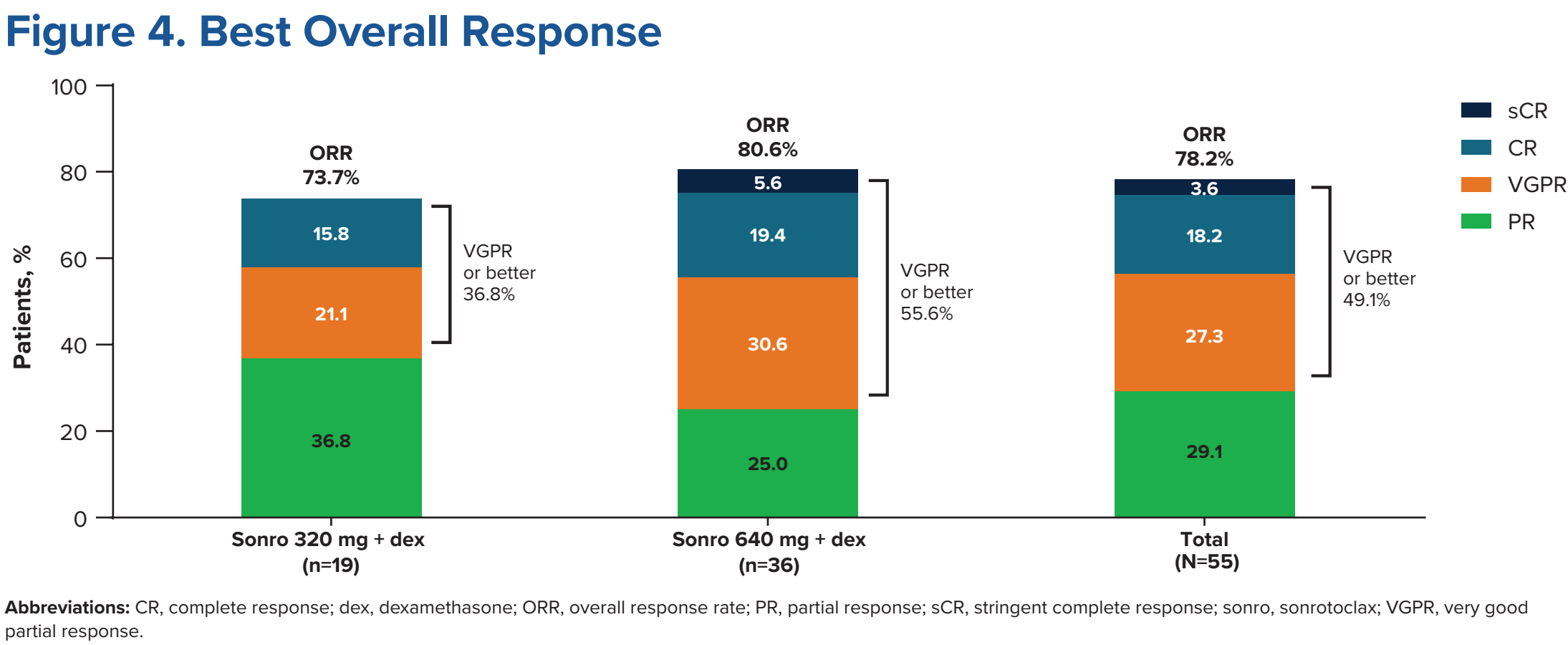
Abbreviations: dex, dexamethasone; sonro, sonrotoclax; TEAE, treatment-emergent adverse event.



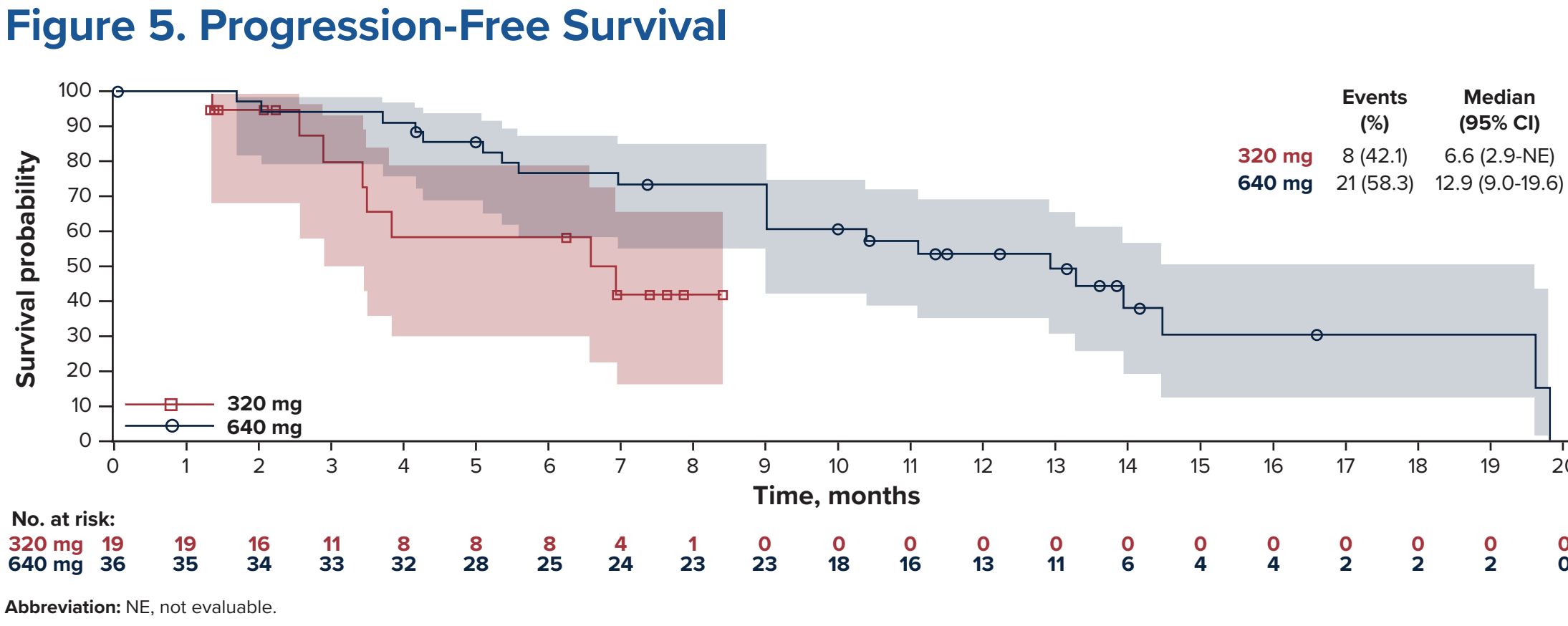
^aInfections listed in the figure are those that occurred in ≥5% of all patients. ^bIncludes the preferred terms agranulocytosis, febrile neutropenia, neutropenia, neutropenic infection, neutropenic sepsis, and neutrophil count decreased. ^cIncludes the preferred terms platelet count decreased and thrombocytopenia.

Abbreviations: dex, dexamethasone; sonro, sonrotoclax; TEAE, treatment-emergent adverse event.

- Among all patients in the 320-mg and 640-mg cohorts, overall response rates were 73.7% and 80.6%; very good partial response or better rates were 36.8% and 55.6%, and complete response or better rates were 15.8% and 25.0%, respectively (**Figure 4**)
- The median time to response was 0.7 months for each cohort; the median duration of response was not reached (range, 1.8 months to not evaluable) for the 320-mg cohort and 12.2 months (range, 8.3-18.9 months) for the 640-mg cohort
- Median progression-free survival was 6.6 months (95% CI, 2.9 months to not evaluable) for the 320-mg cohort and 12.9 months (95% CI, 9.0-19.6 months) for the 640-mg cohort (**Figure 5**)



Abbreviations: CR, complete response; dex, dexamethasone; ORR, overall response rate; PR, partial response; sCR, stringent complete response; sonro, sonrotoclax; VGPR, very good partial response.



REFERENCES

- Bali S, et al. *Ann J Cancer Res*. 2022;12(7):2950-2965.
- Vogler M, et al. *Signal Transduct Target Ther*. 2025;10(1):91.
- Guo Y, et al. *J Med Chem*. 2024;67(10):7836-7854.
- Dhakal B, et al. *ASH* 2024. Abstract 1988.

ACKNOWLEDGMENTS

The authors thank the investigators, site support staff, and especially the patients for participating in this study. This study was sponsored by BeOne Medicines Ltd. Medical writing support was provided by Amanda Martin, PhD, of Nucleus Global, an initial company, and supported by BeOne Medicines.

DISCLOSURES

BD: Honoraria: BMS, Keyopham; Consulting or advisory role: BMS, Janssen, Accella, Kite, Pfizer, Keyopham, Genentech, Natera, Sanofi; Speakers bureau: Janssen, Sanofi, Keyopham, BMS. MH: Consultant: BMS, Johnson & Johnson; Research funding: GSK, AbbVie, BeOne Medicines Ltd, Daiichi Sankyo. CPV: Honoraria: Foris, AbbVie, Pfizer, Johnson & Johnson, Amgen, Sanofi. MUS: Honoraria: Mesena Silicon Biosystems; Research funding: Pfizer, JAK Consulting, AbbVie, Accortane, BMS, Genentech, Sanofi, Sebia; Research funding: AbbVie, BeOne Medicines Ltd, BMS, Genentech, Heidelberg Pharma AG, Janssen, Novartis, Pfizer, Takeda; Membership on an advisory board or committee: Incyte. HCHaas: Consultant: AbbVie; Speakers bureau: BeOne Medicines Ltd, Travel, accommodations, expenses: Janssen. HCheng, AI, WZ, XW, AA: Employment and holds stock: BeOne Medicines Ltd. HQ: Consultant: GSK, AbbVie, BMS, Pfizer, Johnson & Johnson, Roche; Research funding: GSK, AbbVie, BMS. NN, JL, C, KM, KK, GR: No disclosures.